

Manual of Estalo CAD for Palm



Estalo CAD for Palm

Contents

CONTENTS	2
OVERVIEW	4
TOOLBAR	5
ENTITIES	5
<i>Line</i>	<i>5</i>
<i>Polyline</i>	<i>5</i>
<i>Rectangle</i>	<i>5</i>
<i>Circle</i>	<i>5</i>
<i>Arc - Center, Start, End</i>	<i>5</i>
<i>Arc - 3 Points</i>	<i>5</i>
<i>Ellipse</i>	<i>6</i>
<i>Ellipse Arc</i>	<i>6</i>
<i>Point</i>	<i>6</i>
<i>Text</i>	<i>6</i>
<i>Block</i>	<i>6</i>
<i>Insert Entities in Text Mode</i>	<i>6</i>
TOOLS AND DIMENSIONS	9
<i>Select</i>	<i>9</i>
<i>Select All</i>	<i>9</i>
<i>Deselect All</i>	<i>9</i>
<i>Move</i>	<i>9</i>
<i>Erase</i>	<i>9</i>
<i>Edit Entities</i>	<i>9</i>
<i>Corner</i>	<i>10</i>
<i>Rotate</i>	<i>10</i>
<i>Linear Dimension</i>	<i>10</i>
<i>Aligned Dimension</i>	<i>10</i>
<i>Show Dimensions / Hide Dimensions</i>	<i>10</i>
ZOOM	11
<i>Pan</i>	<i>11</i>
<i>Zoom +</i>	<i>11</i>
<i>Zoom -</i>	<i>12</i>
<i>Zoom +/-</i>	<i>12</i>
<i>Zoom Window</i>	<i>12</i>
<i>Zoom Extents</i>	<i>12</i>
OPTIONS MENU	13
<i>Open</i>	<i>13</i>
<i>New</i>	<i>13</i>
<i>Optimized Showing</i>	<i>14</i>
<i>Calculate Area</i>	<i>14</i>
<i>Distance between Lines</i>	<i>14</i>
<i>Layers</i>	<i>14</i>
<i>Project Information</i>	<i>14</i>
<i>Exit</i>	<i>14</i>
NOTES MENU	15
<i>Project</i>	<i>15</i>
<i>Insert/View</i>	<i>15</i>
ABOUT MENU	16
<i>About Estalo CAD</i>	<i>16</i>
<i>Register</i>	<i>17</i>

ESTALO CAD DESKTOP	19
<i>File Menu</i>	<i>19</i>
Add.....	19
Delete	20
Export.....	21
Exit.....	21
<i>Tools Menu</i>	<i>21</i>
Simulator	21
<i>Options Menu</i>	<i>21</i>
Categories	21
Configuration	22
<i>Help Menu</i>	<i>23</i>
Tutorial	23
Language	23
Home Page	23
About System	23
<i>Synchronization.....</i>	<i>23</i>

The CAD market walks with wide steps. More and more the software integrates with business, facilitating communication between the projects, the technical areas and the external world (clients, retailers).

Productivity and agility are the great differentials. Saving time is generating more profits; reducing risks and uncertainties is ensuring an efficient job task and better quality.

On this growing technological evolution new systems are required to supply the market needs.

Therefore, **Estalo** developed a CAD system for handhelds. Investing on high technology, **Estalo CAD for Palm** brings unique features besides processing speed.

Its main features are:

- Reading of CAD files compatible with DWG and DXF files.
- Layers, lines, polylines, rectangles, arcs, circles, ellipses, ellipse arcs, dimensions and texts are some of the entities read by the system.
- All entities read can be created on the own system.
- Graphic mode edition, directly on screen, or in form of values like on desktop computer systems.
- Zoom in several modes like window, extents, among many others.
- Entities edition.
- Creation and edition of notes.
- Measurement of distances and areas.
- Measurements with a **Leica DISTO** laser distancemeter.

The system presents a toolbar with several features.

Entities



Line

After tapping the entity **Line**, specify the first and the second point to form a line.

Polyline

After tapping the entity **Polyline**, specify the points to create a polyline.

Rectangle

After tapping the entity **Rectangle**, specify the first and the second point to form a rectangle.

Circle

After tapping the entity **Circle**, specify the point that will be the circle center and the circle radius.

Arc - Center, Start, End

After tapping the entity **Arc - Center, Start, End**, specify the point that will be the arc center, the start point and the end point of the arc.

Arc - 3 Points

After tapping the entity **Arc - 3 Points**, specify the start point, the mean point and the end point of the arc.

Ellipse

After tapping the entity ***Ellipse***, specify the point that will be the ellipse center, the second point, or the radius, and the third point, or the radius.

Ellipse Arc

After tapping the entity ***Ellipse Arc***, specify the point that will be the ellipse center, the second point, or the radius, and the third point, or the radius. Afterwards, specify the start and end angles that will form the ellipse arc.

Point

After tapping the entity ***Point***, specify the place where the point will be created.

Text

After tapping the entity ***Text***, specify the place where the text will be created. Afterwards, a window will open. Specify the font height, the inclination angle and the desired text.



In order to type the text using the onscreen keyboard, tap the set of characters ***ABC*** or ***123*** placed on the writing area of your handheld.

Block

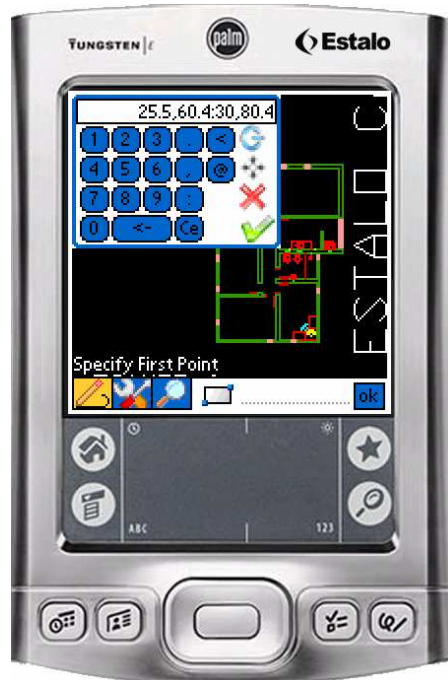
After tapping the entity ***Block***, specify the place where the block will be inserted.

Insert Entities in Text Mode


Estalo CAD for Palm allows the insertion of entities on text mode, that is, by informing the coordinates of each point that will form the entity. For this, tap the desired entity and the field



Inform the coordinates of the point that will form the entity. To separate the **x** coordinate from the **y** coordinate, use comma. Use point as decimal separator. To separate a coordinate **x,y** from another coordinate **x,y** use colon. For example: coordinate **x₁** = 25.5, coordinate **y₁** = 60.4, coordinate **x₂** = 30 e coordinate **y₂** = 80.4, on the handheld type: **25.5,60.4:30,80.4**.



To confirm the typed value, tap the button  and to cancel it, tap the button .

To define the distance and angle from the last inserted point use **@** and **<** respectively. For example: to insert a point distant 50 from the last inserted point at a 45° angle, type on the handheld: **@50<45**. On this case the distance from the last point can be measured using a **Leica DISTO** laser distancemeter. For this turn the distancemeter on, taping the button , place the distancimeter on the right

place to take the distance measurement and tap the button ✚. The distancimeter will take the measured value and send it to the handheld.

Tools and Dimensions



Select

To select a single entity, tap the border of the desired entity. To select many entities, tap and drag the stylus, selecting the desired entities. All the entities that are fully in the selection area will be selected.

Select All

It selects all entities of the project.

Deselect All

It deselects the entities previously selected.

Move

To move the desired entities, select them first and then tap the tool **Move** and drag the selection to the desired place.

Erase

To erase any entity, select it first and then tap the tool **Erase**.

Edit Entities

This option allows changing the style and color of the line that forms the entity. To change them, select the desired entities and then tap the tool **Edit Entities**. Choose the style and color options and tap **OK**. If the select entity is **Text**, its inclination and height can be changed. If the selected entity is **Dimension**, its original measure can be changed. For example: a dimension measure is 29.67 cm and you want that appears on the project 30 cm. Select the dimension, tap **Edit Entities** and on the field **Text**, type **30**.

Corner

It allows connecting two lines. Select the tool **Corner** and then select the first and second lines that will be connected.

Rotate

To rotate one or more entities, select them first and then tap the tool **Rotate**. Specify the rotation center and then the rotation angle of the selected entities.

Linear Dimension

It creates a dimension for the entity and is aligned at 0° or 90° related to the points that form the dimension. Select the entity **Linear Dimension** and then specify the start and end points of the dimension. At last, specify the dimension position point.

Aligned Dimension

It creates a dimension for the entity and is aligned related to the points that form the dimension. Select the entity **Aligned Dimension** and then specify the start and end points of the dimension. At last, specify the dimension position point.

Both the entity **Aligned Dimension** and **Linear Dimension** can be edited, changing this way the color and height of the dimension font. For this, select the dimension and tap **Edit Entities**.

Show Dimensions / Hide Dimensions

To hide the dimensions of the project, tap **Hide Dimensions**. To show them again, tap **Show Dimensions**.

Zoom



Pan

After tapping this icon, drag the stylus to move over the drawing.

Note: on handhelds that have a 5-way Navigator, this can be used to move the drawing on the screen. The central button allows coming back to the original configuration (**Zoom Extents**).



Zoom +

After tapping this icon, select the place that will be zoomed in.

Zoom –

After tapping this icon, select the place that will be zoomed out.

Zoom +/-

After tapping this icon, drag the stylus zooming the drawing in or out.

Zoom Window

After tapping this icon, drag the stylus to open a rectangle. What is selected by the rectangles will be zoomed in.

Zoom Extents

After tapping this icon, the drawing will return to its initial configuration.

Estalo CAD for Palm

Options Menu



Open

It opens a DWG or DXF file.



Estalo CAD for Palm allows storing many files according to your needs. To show files of just some specific category, select it on the selection box at top right.

New

It generates a new blank project.



Estalo CAD for Palm allows creating new files using the existing templates.

Optimized Showing

Tapping this icon, the system will open the drawing without arcs and ellipses, turning the data processing faster.

Calculate Area

After tapping this icon, select the points that define the area to be calculated.

Distance between Lines

Selecting two points, the system will calculate the distance between them. Just tap the icon and the desired points.

Layers

This option will show the layers that are in the project, following the original configurations of the project. It is possible to activate or deactivate the layers.

Project Information

On this item we have information related to the project, such as version of **Estalo CAD for Palm**, project name, background color and line style.

Exit


The system will be closed.



Project

General notes about the project that are not inserted anywhere on the project.

Insert/View

After tapping this icon, tap the place where will be created the note. This way opening a text box, where will be typed the note. After the creation of the note, the icon  will be on this place. Tapping this icon, it will be able to view the note created and delete it, if necessary.

Estalo CAD for Palm

About Menu



About Estalo CAD

It shows information about the system and contact with **Estalo**.

Register

This item refers to the register of the system.

In order to accomplish the registration of **Estalo CAD for Palm** you should:

1. Tap the option **Generate Password**.



2. With this generated password, you should contact with **Estalo** and inform this password.
3. Using this password, **Estalo** will send you a reset code to enable the system.

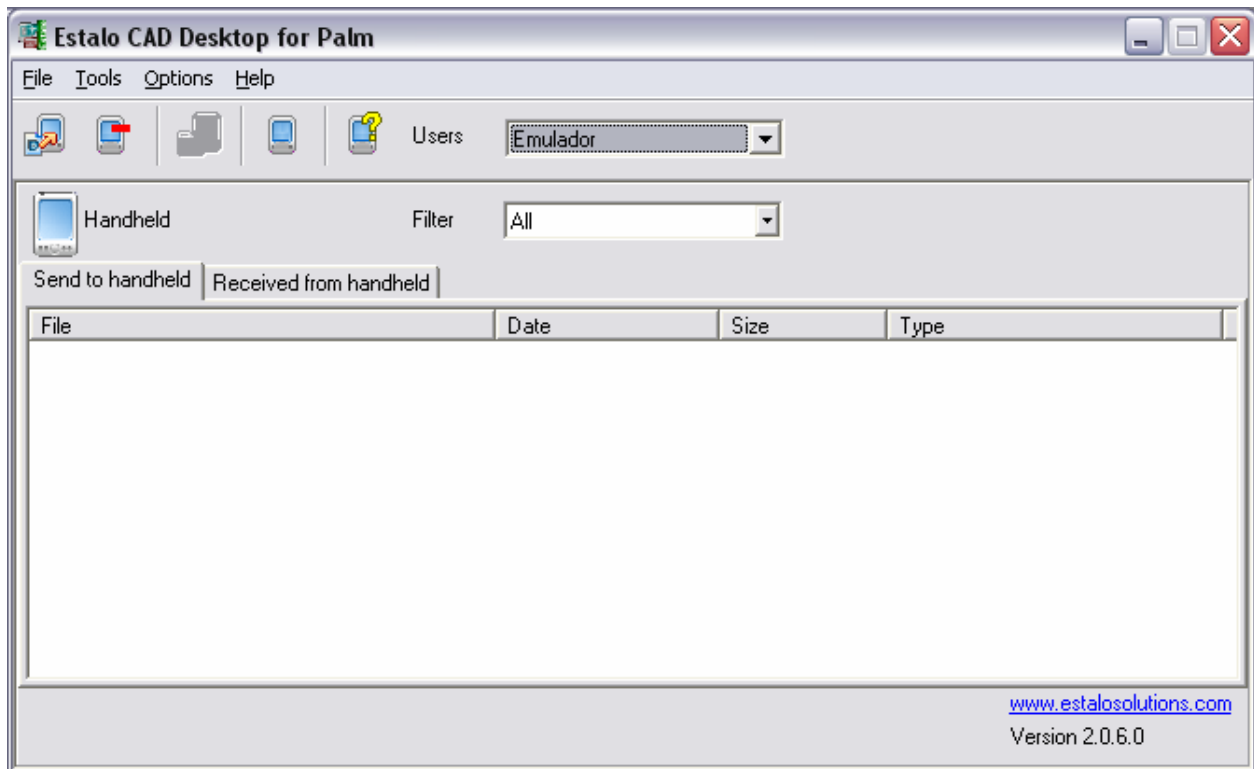


4. Ready! Your **Estalo CAD for Palm** is registered.



Estalo CAD for Palm

Estalo CAD Desktop



Estalo CAD Desktop allows that you transport your DWG or DXF projects from your desktop computer to your handheld in a quick and easy way and vice-versa, as well as that you view these projects on a **Simulator**.


The system has two working modes selected by the tabs **Send to handheld** and **Received from handheld**. The commands described below are available depending on the working mode selected.

File Menu

Add

To insert projects on your handheld, you should first insert them on **Estalo CAD Desktop** and synchronize it with the handheld.

On **Estalo CAD Desktop** you can insert files the following ways:

1. Drag the original file from any folder into the system window or;
2. Click on **File** and then on the option **Insert**, or click on the icon . A window will open in order to search the file and add it on the list of files that will be copied to your handheld.


Now after you have inserted your files on **Estalo CAD Desktop**, you can view them on the **Simulator**, or perform a synchronization to have the files copied to your handheld.

When **Estalo CAD for Palm** is started on the handheld, all the inserted files will be automatically included on the main list of available files.

Note: if you are going to insert a file on **Estalo CAD Desktop** whose name has more than 32 characters, the system will show you a message so that the name of the file is reduced to 32 characters, because the handhelds running **Palm OS** do not accept files whose name have more than 32 characters.

Delete

To delete a file from **Estalo CAD Desktop** do the following:

1. View the list of files added on **Estalo CAD Desktop**, click on the file that will be deleted and press the key **Del** or **Delete** on the keyboard and the file will be deleted or;
2. Select the file and click on **File** and then on the option **Delete**, or click on the icon .

To delete a file from your handheld, do the following:

1. With **Estalo CAD for Palm** running on your handheld, tap on the button **Menu**.
2. Tap on **Open** to list the available files on your handheld.
3. Select the file that will be deleted and tap on the option **Delete**.



Export

So that the files created and edited on the handheld can be made available to be edited on the desktop computer, it is necessary to export them to a directory defined on the option **Configuration**. To export the files, you should select them and click on **File** and then on the option **Export**.

Exit

The system will be closed.

Tools Menu



Simulator

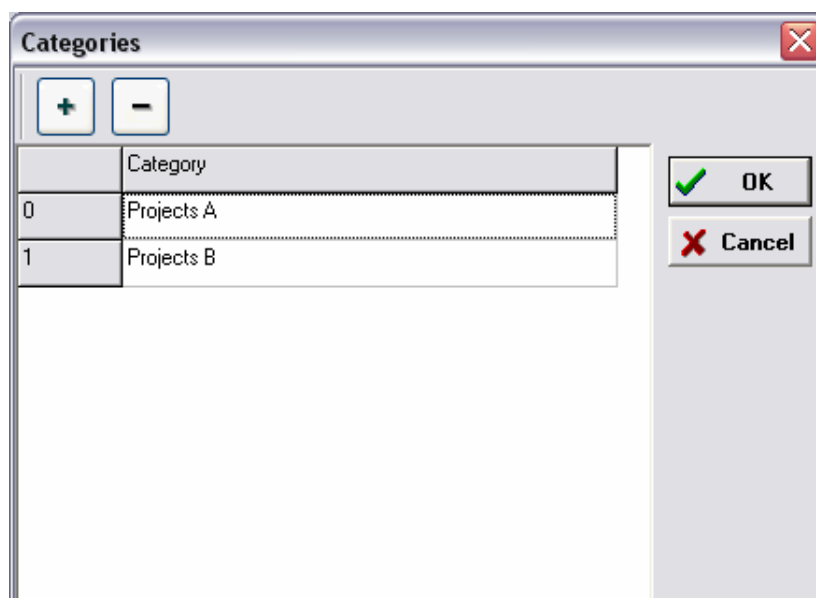
Estalo CAD Desktop has a simulator of **Estalo CAD for Palm** for you to visualize the projects on the computer before they are transported to **Estalo CAD for Palm** on the handheld.

In order to access it, click on **Tools** and then click on **Simulator**. Only **Zoom** commands are available. When right clicking on the simulator window, you can select one of the skins based on several **Palm** handhelds. Each skin has its screen adjusted to the real size in points of the respective handheld (160x160, 320x320 or 320x480).

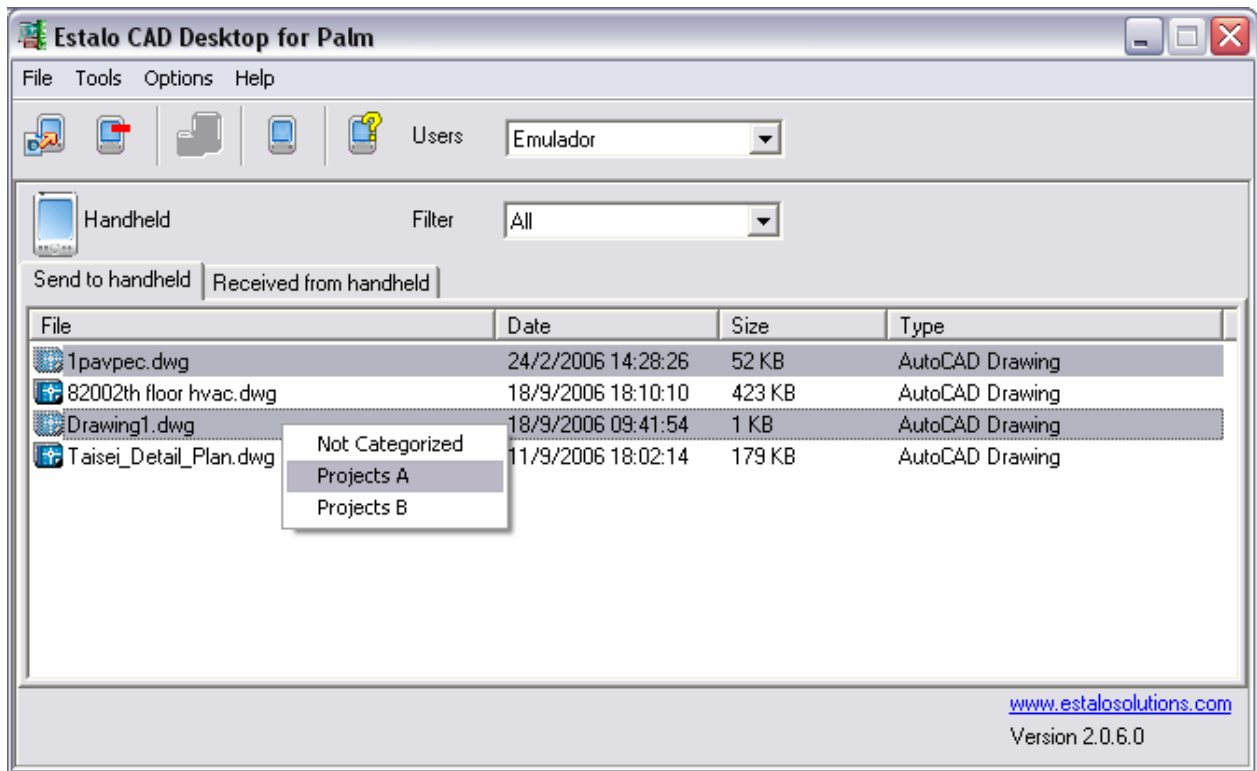
Options Menu

Categories

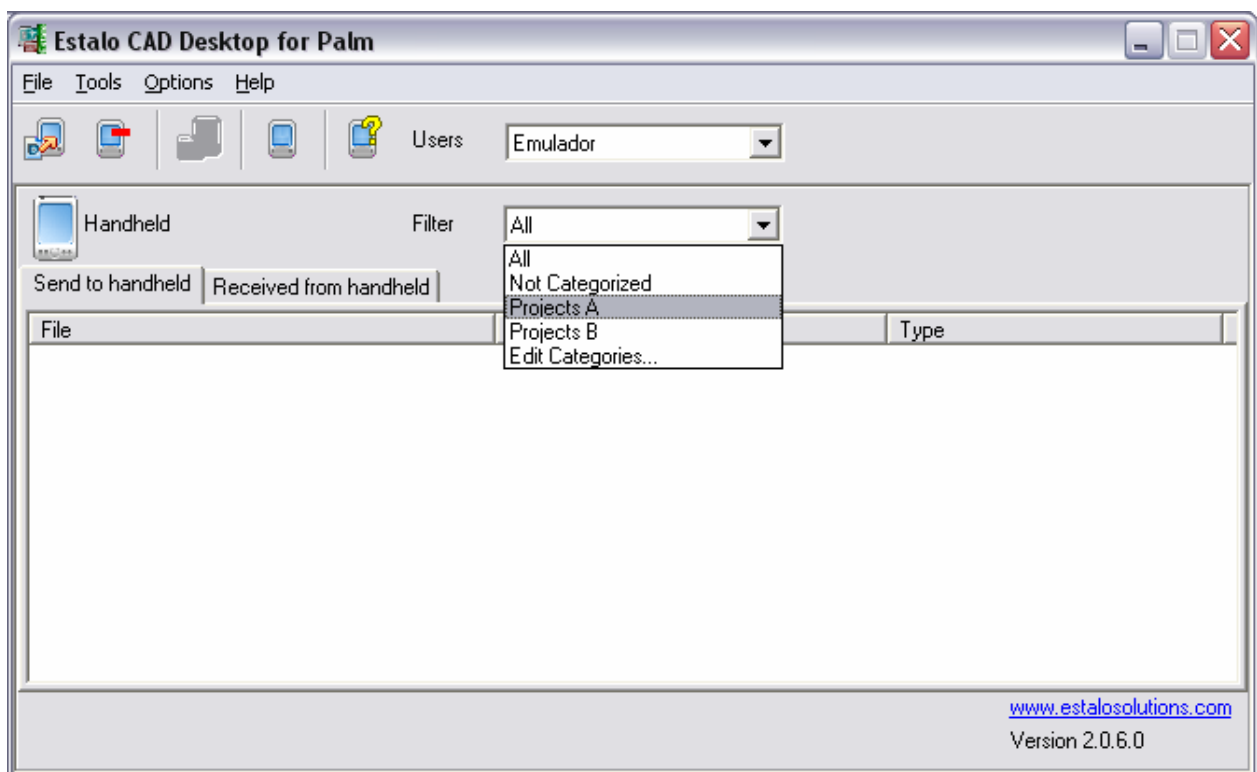
The files to be sent to the handheld, or received from the handheld can be classified in categories. To create a new category, click on **Options** and on the option **Categories**. After, click on the button  and type the category name. To delete a category, select it and click on the button .



To classify the files, select the desired files on the list, right click on a selected file and choose the desired category. To select more than one file, press the **Ctrl** key on the keyboard while you select them.

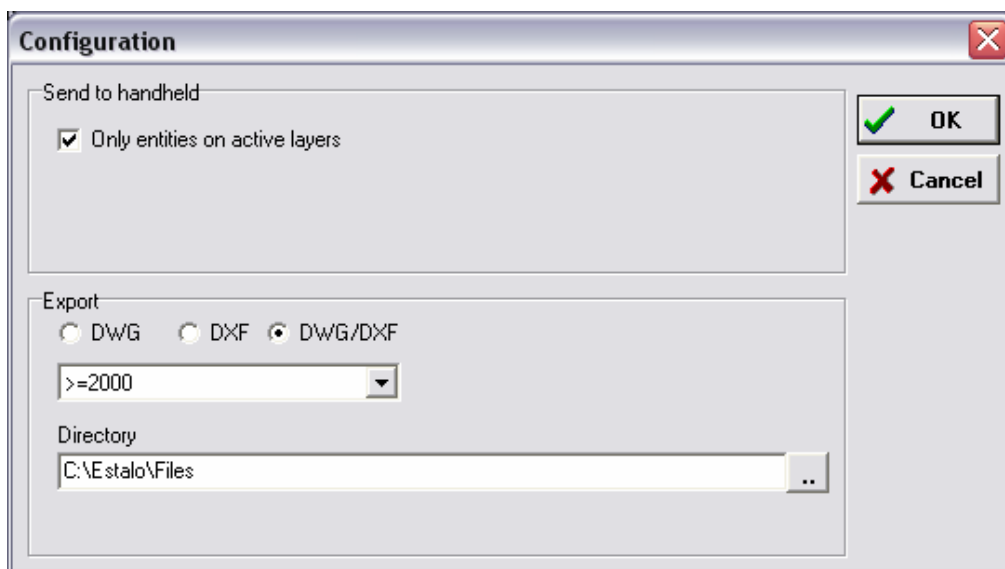


To show only files of a specific category, click on the selection box **Filter** and select the desired category.



Configuration

To change the configurations of **Estalo CAD Desktop**, click on **Options** and on the option **Configuration**. The following window will open.



Select the option ***Only entities on active layers*** to move to the handheld only entities on active layers.

On the option ***Export***, select ***DWG*** to export all files on DWG format. The same occurs with the option ***DXF***. Select the option ***DWG/DXF*** to export the files on their original format.

On the next option, select the version of CAD on which you want the file be exported to the computer.

On the option ***Directory***, select the directory where the files will be exported to.

Help Menu

Tutorial

View this user manual.

Language

Select the system language.

Home Page

It opens your browser and accesses **Estalo** home page.

About System

It shows information about the system and contact with **Estalo**.

Synchronization

Estalo CAD has the ability to synchronize many handhelds with one desktop computer. You can see the files which will be synchronized by user, selecting the different users on the selection box ***Users*** of **Estalo CAD Desktop**.

New users can be added, simply synchronizing with another handheld. The new user name will be then indicated on the system selection box ***Users*** after the end of the synchronization. If the new user name is not shown on the list, perform a new synchronization.

The user name shown on **Estalo CAD Desktop** indicates the handheld that will be synchronized. Certify that the user name of the handheld and the user name shown on **Estalo CAD Desktop** match.

Attention: remember that if you are synchronizing with many handhelds and the system **Estalo CAD Desktop** is started, the user data shown can be different from those that are really been synchronized with the handheld. It happens only when the user name of the handheld does not match with the one indicated on the desktop computer. To see the actual data that are being synchronized, just select the correct user on the selection box **Users** on the desktop computer.



Estalo

estalo@estalosolutions.com

<http://www.estalosolutions.com>

20070403